

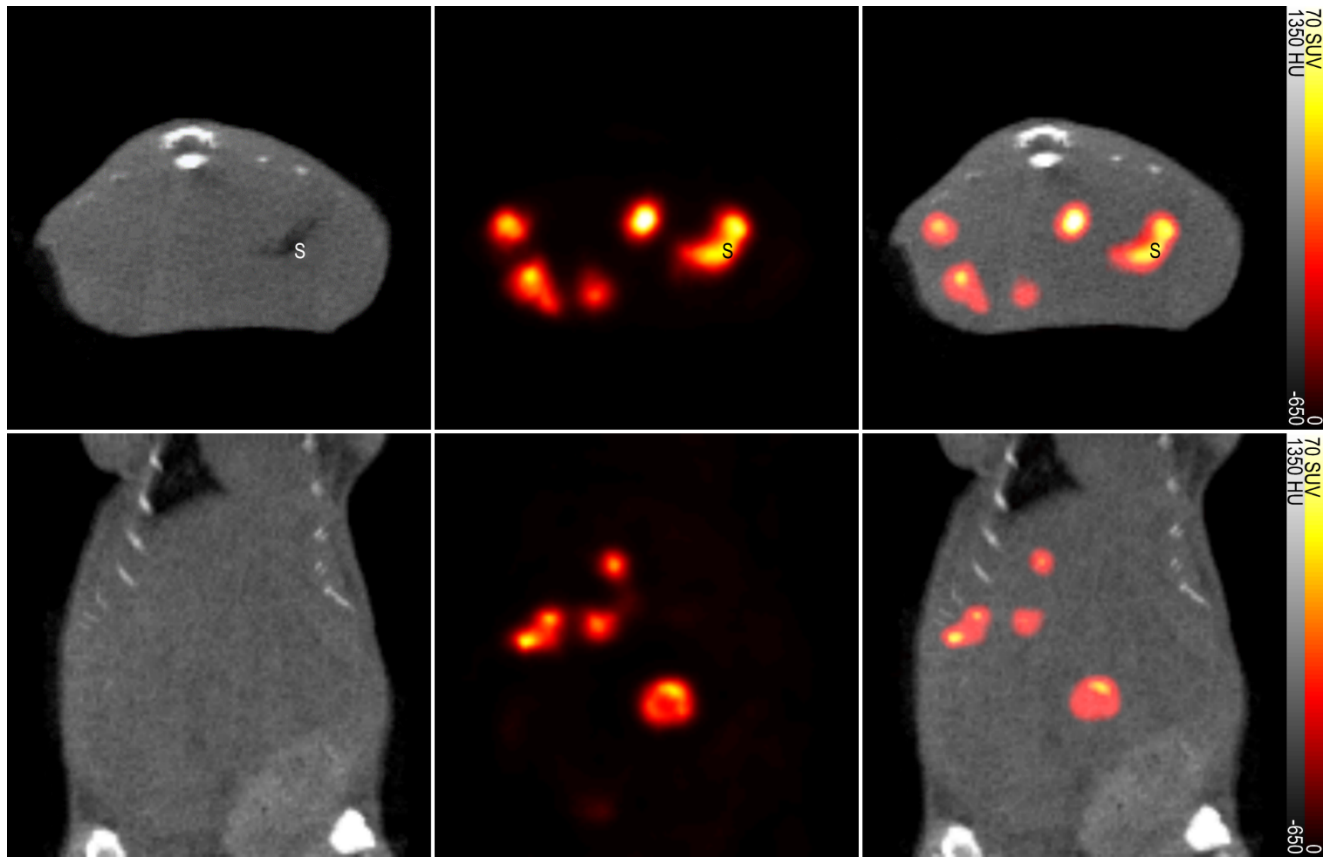
Supplemental material for Merrill and Inguscio *et al*, “Sensitive, non-immunogenic in vivo imaging of cancer metastases and immunotherapy response.”

Supplemental Figure S1

1 MEGAEAGARATFGPWDYGVFATMLLVSTGIGLWVGLARGGQRSADDDFTGGRQLAAVPVG
61 LSLAASFMSAVQVLGVPAAEAARYGLKFLWMCVGQLLNSLLTALLFLPIFYRLGLTSTYQY
121 LELRFSRAVRLCGTLQYLVATMLYTGIVIIYAPALILNQVTGLDIWASLLSTGIICTLYTT
181 VGGMKAVVWTDVFGVVVMLVGFVWILARGVMLMGGPWNVLSLAQNHSRINLMDFDPDPRS
241 RYTFWTFVVGSLVWLSMYGVNQAQVQRYVACHTERKAKLALLVNQLGLFLIVASAACCG
301 IVMFVYYKDCDPLLTGRIAAPDQYMPLLVLDIFEDLPGVPGFLACAYSGTLSTASTSIN
361 AMAAVTVEDLIKPRMPSLAPRKLVFISKGLSFIYGSTCLTVAALSSLLGGGVLQGSFTVM
421 GVISGPLLGAFITLGMLLPACNTPGVLSGLTAGLAVSLWVAVGATLYPPGEQTMGVLP TSA
481 AGCTNASVLPSPPGAANTS RGIPSSGMDSGRPAFADTFYAVSYLYYGALGTLTTMLCGAL
541 ISYLTGPTKRSSLGPGLLWWDLARQTASVAPKEDTTTLED SLVKGPEDIPAATKKPPGFR
601 PEAETHPLYLGHDAETNL

NCBI Reference Sequence NP_444478.2 for murine NIS (Slc5a5)

Supplemental Figure S2



CT (left, grayscale), SPECT (middle, hot) and coregistered SPECT/CT (right) slices showing pertechnetate uptake in liver lesions developed following portal vein injection of immunostealth-labeled murine PDAC cells. Radiotracer is also taken up by NIS endogenously expressed in the stomach ('S'). CT window is set from -650 to 1350 HU. SPECT is set from 0 to 70 SUV.

Supplemental Movie S3

Maximum intensity projection (MIP) image of coregistered SPECT/CT images of the same subject as Figure S2. Endogenous NIS expression is seen in the stomach, salivary glands and thyroid, and radiotracer clearance in the urinary bladder. Hotspots in the thoracic region are mNIS-labeled individual metastatic lesions. MIP rendered from CT images with a window of -500 to 4000 HU and a SPECT window of 0 to 70 SUV.